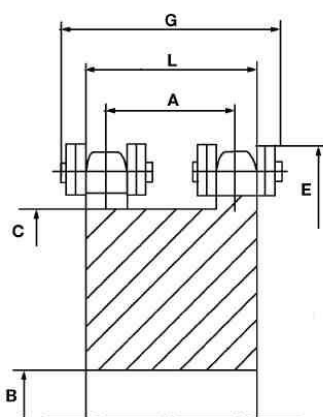


Koła łańcuchowe (tandemy) dla dwóch łańcuchów jednorzędowych B-1



Numer	Ilość zębów Z	Srednica podziałowa	B	A	C	E	G	L
-------	---------------	---------------------	---	---	---	---	---	---

3/8 06B-1

2P-38-15	15	45.82	10	17.8	35	55	33.8	23
2P-38-17	17	51.84	12	17.8	41	61	33.8	23
2P-38-19	19	57.86	12	17.8	47	67	33.8	23
2P-38-21	21	63.91	15	17.8	53	73	33.8	23
2P-38-23	23	69.95	15	17.8	60	79	33.8	23
2P-38-25	25	76.00	15	17.8	66	85	33.8	23

1/2" 08B-1

2P-12-15	15	61.09	15	23.0	48	72	38.0	30
2P-12-17	17	69.11	15	23.0	56	80	38.0	30
2P-12-19	19	77.17	15	23.0	64	88	38.0	30
2P-12-21	21	85.22	15	23.0	72	96	38.0	30
2P-12-23	23	93.27	15	23.0	80	104	38.0	30
2P-12-25	25	101.32	15	23.0	88	112	38.0	30

5/8" 10B-1

2P-58-15	15	76.35	15	25.2	60	91	48.2	34
2P-58-17	17	86.39	15	25.2	70	101	48.2	34
2P-58-19	19	96.44	20	25.2	80	111	48.2	34
2P-58-21	21	106.53	20	25.2	90	121	48.2	34
2P-58-23	23	116.59	20	25.2	100	131	48.2	34

3/4" 12B-1

2P-34-15	15	91.62	20	33.4	71	108	60.4	44
2P-34-17	17	103.68	20	33.4	83	120	60.4	44
2P-34-19	19	115.75	20	33.4	95	132	60.4	44
2P-34-21	21	127.81	25	33.4	107	144	60.4	44

1" 16B-1

2P-1-15	15	122.17	20	52.5	96	148	101.5	68
2P-1-17	17	138.23	25	52.5	112	164	101.5	68
2P-1-19	19	154.33	30	52.5	128	180	101.5	68
2P-1-21	21	170.41	30	52.5	144	196	101.5	68